



**India Meteorological Department
(Ministry of Earth Sciences)**

BULLETIN NO. 7 (BoB/02/2023)

TIME OF ISSUE: 0215 HOURS IST **DATED: 11.05.2023**
FROM: INDIA METEOROLOGICAL DEPARTMENT (FAX NO. 24643965/24699216/24623220)

TO: CONTROL ROOM, NDM, MINISTRY OF HOME AFFAIRS (FAX.NO. 23093750)
CONTROL ROOM NDMA (FAX.NO. 26701729)
CABINET SECRETARIAT (FAX.NO.23012284, 23018638)
PS TO HON'BLE MINISTER FOR S & T AND EARTH SCIENCES (FAX NO.23316745)
SECRETARY, MOES (FAX NO. 24629777)
H.Q. (INTEGRATED DEFENCE STAFF AND CDS) (FAX NO. 23005137/23005147)
DIRECTOR GENERAL, DOORDARSHAN (23385843)
DIRECTOR GENERAL, AIR (23421105, 23421219)
PIB MOES (FAX NO. 23389042)
UNI (FAX NO. 23355841)
D.G. NATIONAL DISASTER RESPONSE FORCE (NDRF) (FAX NO. 26105912, 2436 3260)
DIRECTOR, PUNCTUALITY, INDIAN RAILWAYS (FAX NO. 23388503)
CHIEF SECRETARY, ANDAMAN & NICOBAR ISLANDS (FAX NO. 03192- 232656)
CHIEF SECRETARY, GOVT. WEST BENGAL (FAX NO. 033-22144328)
CHIEF SECRETARY, GOVT. OF ODISHA (FAX NO. 0674 -2536660)
CHIEF SECRETARY, GOVT. OF ANDHRA PRADESH (FAX NO. 0863-2441029, 08645-246600)
CHIEF SECRETARY, GOVT. OF TAMIL NADU (FAX NO. 044-25672304)
CHIEF SECRETARY, GOVT. OF PUDUCHERRY (FAX NO. 0413-2337575, 2334145)
CHIEF SECRETARY, GOVT. OF TRIPURA (FAX NO. 0381-2414013, 2413200)
CHIEF SECRETARY, GOVT. OF MIZORAM (FAX NO. 0389-2322745, 2320588)
CHIEF SECRETARY, GOVT. OF ASSAM (FAX NO. 0361-2260900)
CHIEF SECRETARY, GOVT. OF MANIPUR (FAX NO. 0385-2452629)
CHIEF SECRETARY, GOVT. OF NAGALAND (FAX NO. 0370-2270057)

Sub: Deep Depression over southeast Bay of Bengal

The deep depression over southeast Bay of Bengal moved north-northwestwards with a speed of 15 kmph during past 06 hours and lay centered at 2330 hours IST of 10th May 2023 over the same region near latitude 10.8°N and longitude 88.2°E, about 500 km west-southwest of Port Blair, 1250 km south-southwest of Cox's Bazar (Bangladesh) and 1150 km south-southwest of Sittwe (Myanmar).

It is very likely to move north-northwestwards and intensify gradually into a cyclonic storm over the same region by early morning of today the 11th May 2023. Then continuing to move north-northwestwards, it will gradually intensify further into a severe cyclonic storm by 11th May night and very severe cyclonic storm by 12th May forenoon over central Bay of Bengal. Thereafter, it is likely to recurve gradually, move north-northeastwards from 12th May morning. It is likely to weaken slightly from 13th May evening and cross southeast Bangladesh and north Myanmar coasts between Cox's Bazar (Bangladesh) and Kyaukpyu (Myanmar) around forenoon of 14th May, 2023 with maximum sustained wind speed of 120-130 kmph gusting to 145 kmph.

Forecast track and intensity are given below:

Date/Time (IST)	Position (Lat. °N/ long. °E)	Maximum sustained surface wind speed (Kmph)	Category of cyclonic disturbance
10.05.23/2330	10.8/88.2	55-65 gusting to 75	Deep Depression
11.05.23/0530	11.4/88.0	60-70 gusting to 80	Cyclonic Storm
11.05.23/1130	11.9/87.9	70-80 gusting to 90	Cyclonic Storm
11.05.23/1730	12.4/87.8	80-90 gusting to 100	Cyclonic Storm
11.05.23/2330	12.9/87.9	90-100 gusting to 110	Severe Cyclonic Storm
12.05.23/1130	13.7/88.1	120-130 gusting to 145	Very Severe Cyclonic Storm
12.05.23/2330	15.1/88.8	130-140 gusting to 155	Very Severe Cyclonic Storm
13.05.23/1130	16.6/89.8	140-150 gusting to 165	Very Severe Cyclonic Storm
13.05.23/2330	18.4/91.3	130-140 gusting to 155	Very Severe Cyclonic Storm
14.05.23/1130	20.3/93.1	120-130 gusting to 145	Very Severe Cyclonic Storm
14.05.23/2330	23.5/95.7	55-65 gusting to 75	Deep Depression

Warnings:

(i) Rainfall (warning graphics enclosed)

- ❖ **Andaman & Nicobar Islands:** Rainfall at most places with Heavy rainfall at isolated places is likely till 11th May & 12th May.
- ❖ **Tripura & Mizoram:** Rainfall at most places with Heavy rainfall at isolated places is likely on 13th May and heavy to very heavy rainfall at isolated places on 14th May.
- ❖ **Nagaland, Manipur & south Assam:** Rainfall at many places with Heavy rainfall at isolated places is on 14th May.

(ii) Wind warning:

- ❖ **Andaman & Nicobar Islands:**
Squally wind speed reaching 55-65 kmph gusting to 75 kmph is likely to prevail till 11th May.
- ❖ **Tripura, Mizoram & south Manipur:**
Squally wind speed reaching 50-60 kmph gusting to 70 kmph is very likely to prevail on 14th May.
- ❖ **Andaman Sea:**
Squally wind speed reaching 50-60 kmph gusting to 70 kmph is likely to prevail over south Andaman Sea till 11th and over North Andaman Sea till 12th May.
- ❖ **Southeast Bay of Bengal:**
Squally wind speed reaching 55-65 kmph gusting to 75 kmph are prevailing and likely to become Gale wind speed reaching 70-80 kmph gusting to 90 kmph from 11th morning and 120-130 kmph gusting to 140 kmph by 12th morning to afternoon and decrease thereafter becoming squally wind speed reaching 50-60 kmph gusting to 70 kmph on 13th May.
- ❖ **Adjoining areas of southwest Bay of Bengal:**
Squally wind speed reaching 45-55 kmph gusting to 65 kmph is likely till 11th May.
- ❖ **Eastcentral Bay of Bengal:**
Squally weather with wind speed reaching 40-50 kmph gusting to 60 kmph are prevailing and likely to become 60-70 kmph gusting to 80 kmph by 11th morning; gale wind speed reaching 80-100 kmph gusting to 120 kmph on 11th evening, 130-140 kmph gusting to 150 kmph from 12th May evening and 140-150 kmph gusting to 165 kmph on 13th May forenoon, and then gradually decrease becoming 100-110 gusting to 120 by 14th May morning.

- ❖ **Westcentral Bay of Bengal:**
Squally weather with wind speed reaching 40-50 kmph gusting to 60 kmph are likely to prevail from 11th morning.
It would gradually increase becoming gale wind speed reaching 60-70 kmph gusting to 80 kmph from 11th May evening;
Gale wind speed reaching 110-120 kmph gusting to 130 kmph on 12th morning and becoming 90-100 kmph gusting to 110 kmph from 13th May morning and gradually decreases thereafter.
- ❖ **Northeast Bay of Bengal:**
Squally wind speed reaching 50-60 kmph gusting to 70 kmph is likely on 12th May.
Gale wind speed reaching 70-80 gusting to 90 likely to commence from 13th morning and gradually increase and becoming 130-140 kmph gusting 150 kmph during 13th evening and night. Subsequently, it is likely to decrease to 120-130 kmph gusting to 140 kmph on 14th May forenoon and significantly decrease thereafter.
- ❖ **Adjoining areas of Northwest Bay of Bengal:**
Squally wind speed reaching 50-60 kmph gusting to 70 kmph is likely from 13th May to 14th May forenoon and decrease thereafter.

(iii) Sea condition

- ❖ **Andaman Sea:**
Very rough to high over Andaman Sea is likely to prevail till 11th May.
Very rough to rough over north Andaman Sea during 12th May.
- ❖ **Southeast Bay of Bengal:**
Very rough to high over Southeast Bay of Bengal is likely to prevail till 11th May.
High to very high over Southeast Bay of Bengal on 12th May.
- ❖ **Eastcentral Bay of Bengal:**
High to very high over Eastcentral Bay of Bengal is likely to prevail till 11th May.
Very High to phenomenal over Eastcentral Bay of Bengal during 12th & 13th May.
- ❖ **Adjoining areas of Westcentral Bay of Bengal:**
Very rough to high over adjoining area of Westcentral Bay of Bengal is likely to prevail till 11th May.
High to Very High over adjoining area of Westcentral Bay of Bengal on 12th May.
- ❖ **Northeast Bay of Bengal:**
Rough to very rough over Northeast Bay of Bengal on 12th May.
Phenomenal to very high over Northeast Bay of Bengal during 13th & 14th May.
- ❖ **Adjoining areas of Northwest Bay of Bengal:**
Rough to very rough over adjoining area of Northwest Bay of Bengal during 13th & 14th May.

(iv) Fishermen Warning (warning graphics enclosed)

- ❖ Fishermen, ships, boats and trawlers are advised not to venture into southeast Bay of Bengal and south Andaman Sea till 11th May, central Bay of Bengal and north Andaman Sea till 14th May morning, and into northeast Bay of Bengal during 12th-14th May.
- ❖ Those over central Bay of Bengal and north Andaman Sea are advised to return to coast.

(v) Advisory

- ❖ Regulation of tourism and offshore activities and shipping near Andaman & Nicobar Islands till 13th May.
- ❖ Regulation of shipping activity over the sea areas of southeast Bay of Bengal and Andaman Sea till 12th May, eastcentral Bay of Bengal till 14th , and westcentral Bay of Bengal till 13th May.
- ❖ Regulation of shipping activity over the sea areas of northeast Bay of Bengal during 12th-14th May.

(vi) Damage expected over Mizoram, Tripura, and South Manipur

- ❖ Minor Damage to loose/unsecured structures
- ❖ Some breaches in kutcha road due to heavy rain with the possibility of landslide in vulnerable areas
- ❖ Damage to small trees like Banana, Drum stick and Papaya etc.
- ❖ Damage to standing crops

The system is under continuous surveillance and the next message will be issued at 0830 hours IST of today, the 11th May 2023.

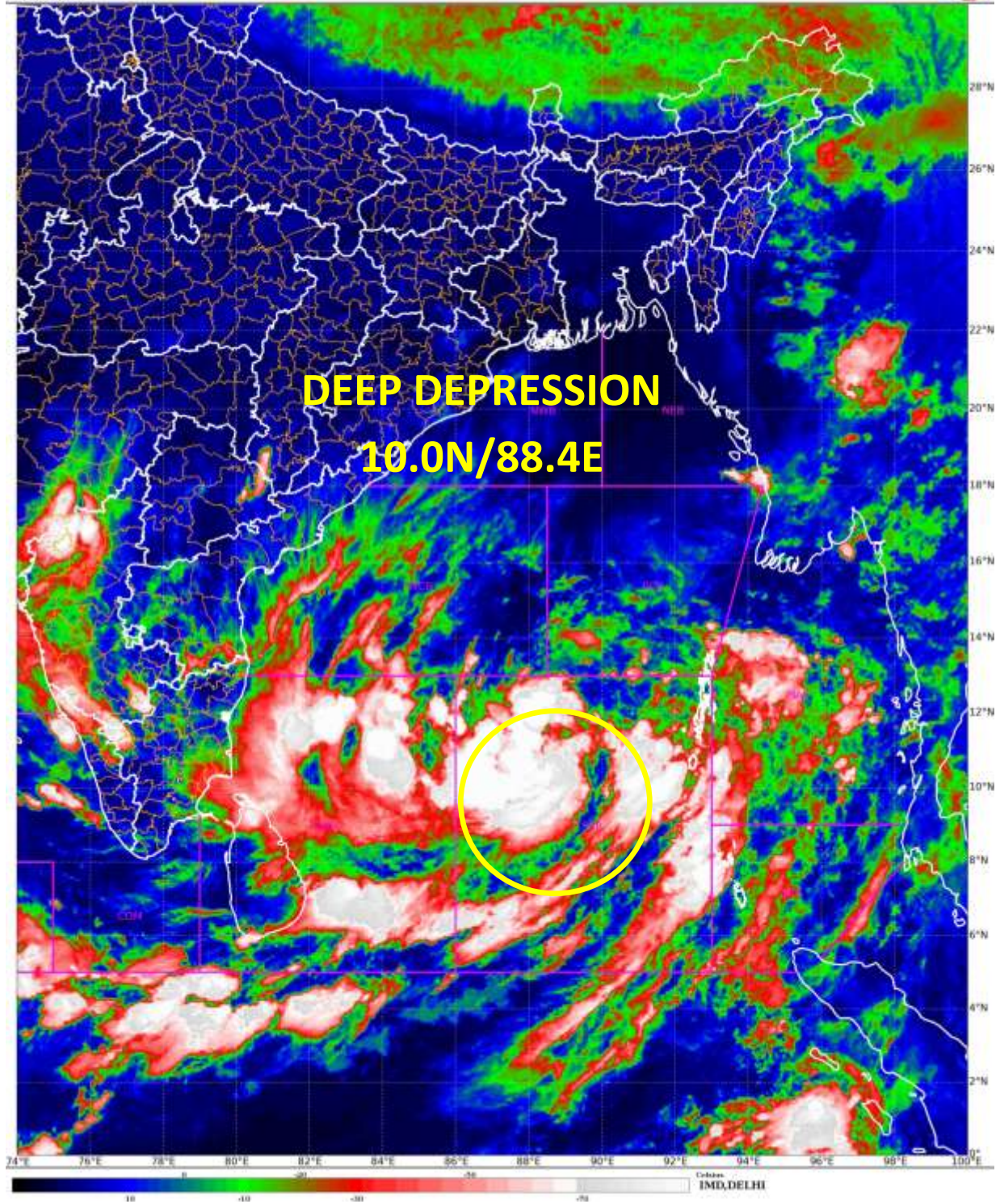
(Surendra Pradap Singh)

Scientist C, Cyclone Warning Division, New Delhi

Copy to: ACWC Kolkata/ ACWC Chennai/ CWC Bhubaneswar/CWCVisakhapatnam/MO Port Blair

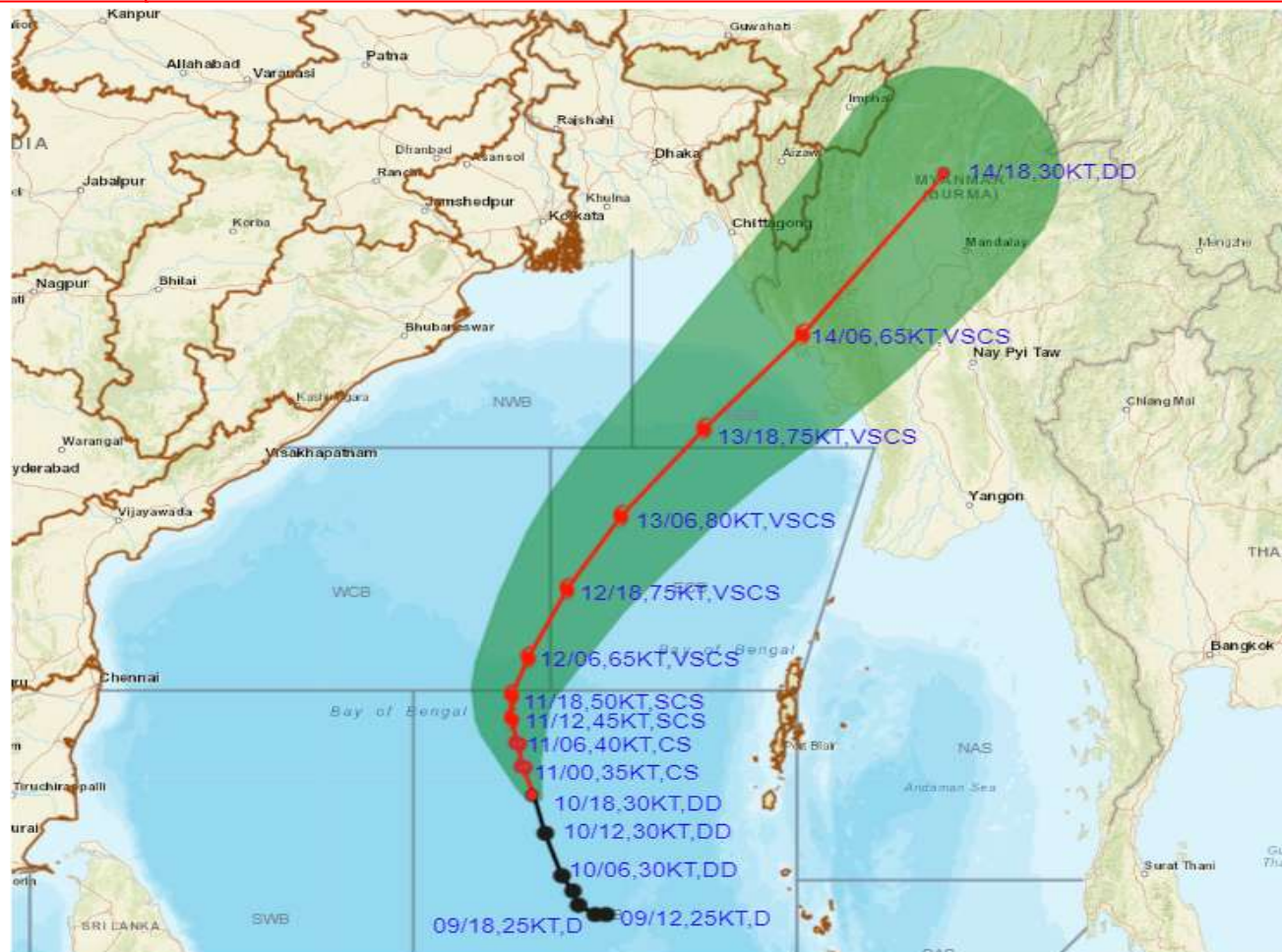
SAT : INSAT-3D IMG
IMG_TIR1_TEMP 10.8 um
LIC Mercator

10-05-2023/(1930 to 1956) GMT
11-05-2023/(0100 to 0126) IST





OBSERVED AND FORECAST TRACK ALONGWITH CONE OF UNCERTAINTY OF DEEP DEPRESSION OVER SOUTHEAST BAY OF BENGAL BASED ON 1800 UTC (2330 IST) OF 10TH MAY 2023.



DATE/TIME IN UTC
IST=UTC + 0530
L: LOW PRESSURE AREA
WML: WELL MARKED LOW PRESSURE AREA
D: DEPRESSION (17-27 KT)
DD: DEEP DEPRESSION (28-33 KT)
CS: CYCLONIC STORM (34-47 KT)
SCS: SEVERE CYCLONIC STORM (48-63KT)
VSCS: VERY SEVERE CYCLONIC STORM (64-89 KT)
ESCS: EXTREMELY SEVERE CYCLONIC STORM (90-119 KT)
SuCS: SUPER CYCLONIC STORM (≥ 120 KT)

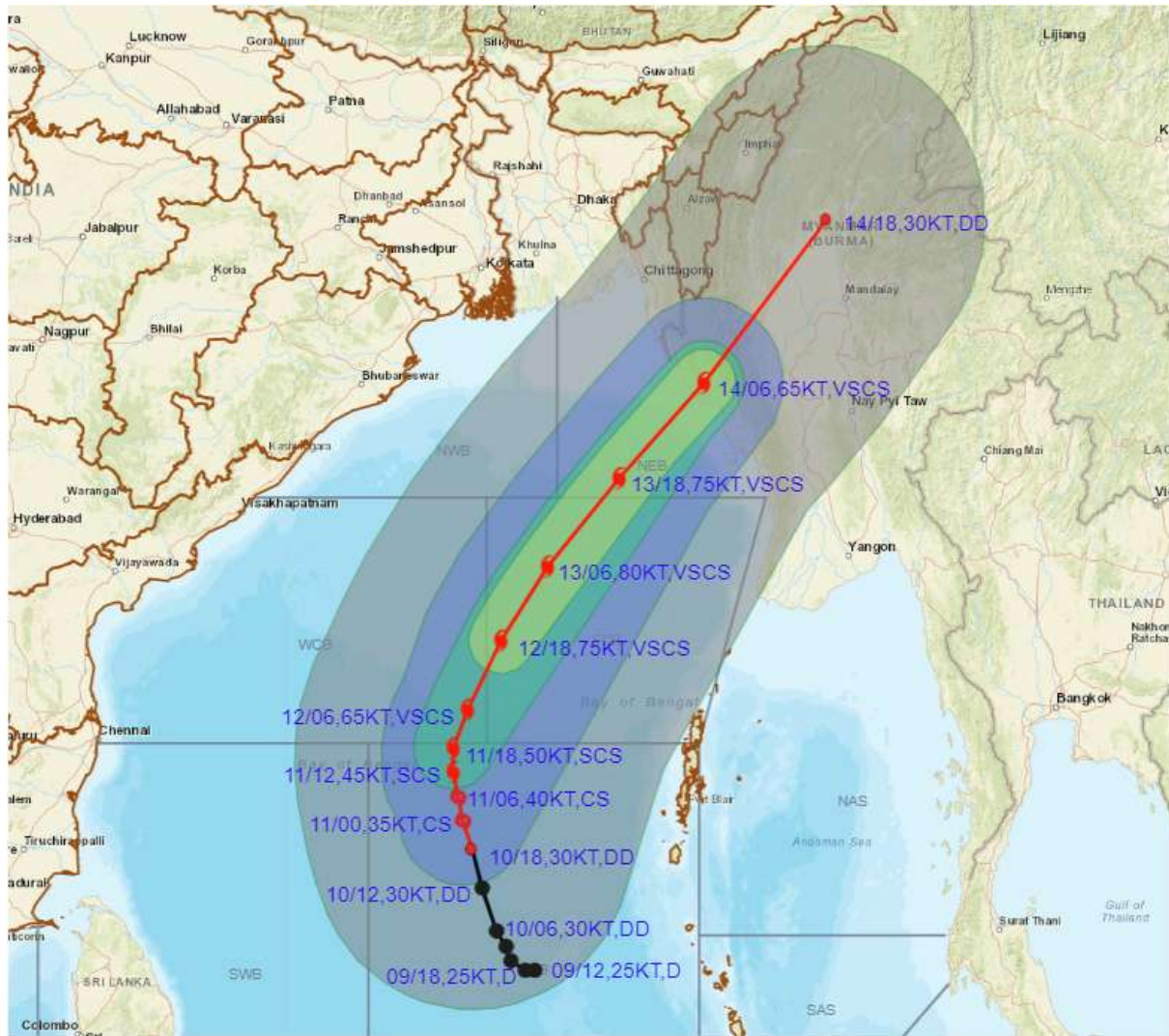
- LESS THAN 34 KT
- 34-47 KT
- ≥ 48 KT
- OBSERVED TRACK
- FORECAST TRACK
- CONE OF UNCERTAINTY

Forecast distance (km) and direction of the centre from nearest 5 coastal stations

Forecast Date and Time	Lead Period	Lat	Lon	Station 1	Station 2	Station 3	Station 4	Station 5
10.05.23/1800	0	10.8	88.2	HUT BAY (476,W)	PORT BLAIR (502,W)	CAR NICOBAR (540,WNW)	LONG ISLAND (547,WSW)	MAYA BANDAR (565,WSW)
11.05.23/0000	6	11.4	88.0	HUT BAY (505,W)	PORT BLAIR (515,W)	LONG ISLAND (549,WSW)	MAYA BANDAR (561,WSW)	CAR NICOBAR (585,WNW)
11.05.23/0600	12	11.9	87.9	PORT BLAIR (526,W)	HUT BAY (528,WNW)	LONG ISLAND (551,W)	MAYA BANDAR (557,W)	CAR NICOBAR (620,WNW)
11.05.23/1200	18	12.4	87.8	PORT BLAIR (541,W)	HUT BAY (556,WNW)	LONG ISLAND (558,W)	MAYA BANDAR (559,W)	COCO ISLAND (633,WSW)
11.05.23/1800	24	12.9	87.8	PORT BLAIR (552,WNW)	MAYA BANDAR (555,W)	LONG ISLAND (560,W)	HUT BAY (578,WNW)	COCO ISLAND (618,WSW)



OBSERVED AND FORECAST TRACK ALONGWITH QUADRANT WIND DISTRIBUTION OF DEEP DEPRESSION OVER SOUTHEAST BAY OF BENGAL BASED ON 1800 UTC (2330 IST) OF 10TH MAY 2023.



DATE/TIME IN UTC
 IST=UTC + 0530
 L: LOW PRESSURE AREA
 WML: WELL MARKED LOW PRESSURE AREA
 D: DEPRESSION (17-27 KT)
 DD: DEEP DEPRESSION (28-33 KT)
 CS: CYCLONIC STORM (34-47 KT)
 SCS: SEVERE CYCLONIC STORM (48-63KT)
 VSCS: VERY SEVERE CYCLONIC STORM (64-89 KT)
 ESCS: EXTREMELY SEVERE CYCLONIC STORM (90-119 KT)
 SuCS: SUPER CYCLONIC STORM (≥ 120 KT)

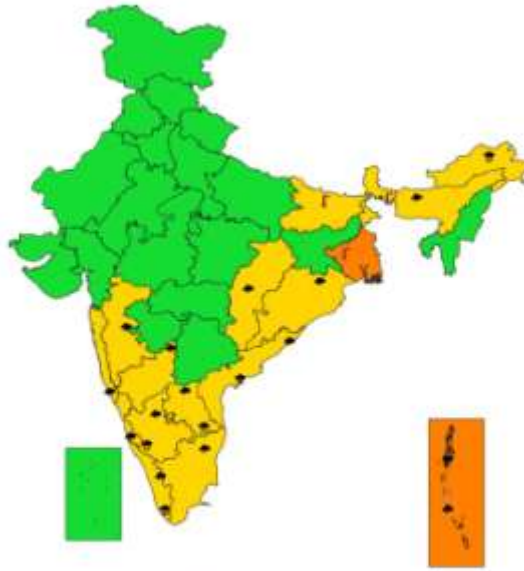
● LESS THAN 34 KT
 ○ 34-47 KT
 ● ≥ 48 KT
 — OBSERVED TRACK
 — FORECAST TRACK
 ▲ CONE OF UNCERTAINTY
 AREA OF MAXIMUM SUSTAINED WIND SPEED:
 ■ 28-33 KT (52-61 KMPH)
 ■ 34-49 KT (62-91 KMPH)
 ■ 50-63 KT (92-117 KMPH)
 ■ ≥ 64 (≥118 KMPH)

IMPACT OVER THE SEA

MSW (knot/kmph)	Impact	Action
28-33 (52-61)	Very rough seas	Total suspension of fishing operations
34-49 (62-91)	High to very high seas	Total suspension of fishing operations
50-63 (92-117)	Very high seas	Total suspension of fishing operations
≥ 64 (≥118)	Phenomenal	Total suspension of fishing operations



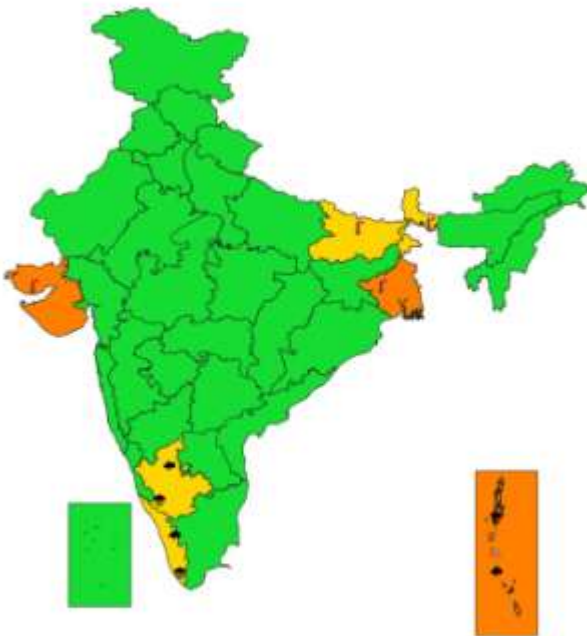
**SUBDIVISIONWISE WEATHER WARNING FOR DAY 1
(10-5-2023)**



- | | | |
|--|---|---|
| <ul style="list-style-type: none"> ● Heavy Rain ⊖ Heavy Snow ⚡ Thunderstorms & Lightning ⚡ Hailstorm | <ul style="list-style-type: none"> ☁ Dust Storm ⚡ Strong Surface Winds 🔥 Heat Wave ❄ Cold wave ☁ Fog | <p>Subdivision color</p> <ul style="list-style-type: none"> 🟢 NO WARNING 🟡 WATCH (BE UPDATED) 🟠 ALERT (BE PREPARED) 🔴 WARNING (TAKE ACTION) |
|--|---|---|



**SUBDIVISIONWISE WEATHER WARNING FOR DAY 2
(11-5-2023)**



- | | | |
|--|---|---|
| <ul style="list-style-type: none"> ● Heavy Rain ⊖ Heavy Snow ⚡ Thunderstorms & Lightning ⚡ Hailstorm | <ul style="list-style-type: none"> ☁ Dust Storm ⚡ Strong Surface Winds 🔥 Heat Wave ❄ Cold wave ☁ Fog | <p>Subdivision color</p> <ul style="list-style-type: none"> 🟢 NO WARNING 🟡 WATCH (BE UPDATED) 🟠 ALERT (BE PREPARED) 🔴 WARNING (TAKE ACTION) |
|--|---|---|



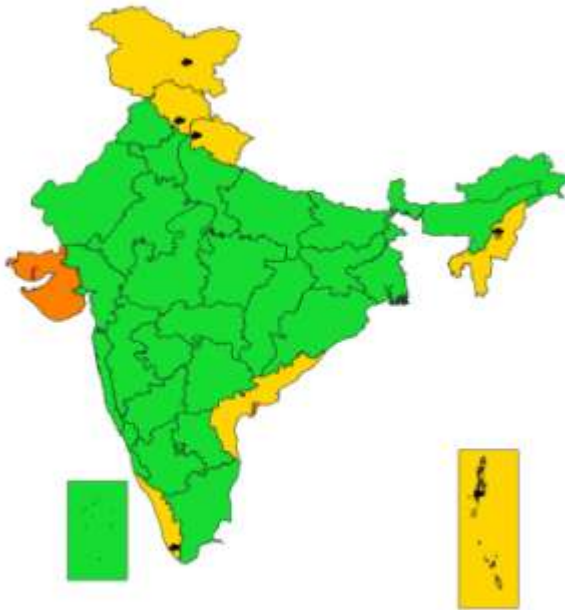
**SUBDIVISIONWISE WEATHER WARNING FOR DAY 3
(12-5-2023)**



- | | | |
|--|---|---|
| <ul style="list-style-type: none"> ● Heavy Rain ⊖ Heavy Snow ⚡ Thunderstorms & Lightning ⚡ Hailstorm | <ul style="list-style-type: none"> ☁ Dust Storm ⚡ Strong Surface Winds 🔥 Heat Wave ❄ Cold wave ☁ Fog | <p>Subdivision color</p> <ul style="list-style-type: none"> 🟢 NO WARNING 🟡 WATCH (BE UPDATED) 🟠 ALERT (BE PREPARED) 🔴 WARNING (TAKE ACTION) |
|--|---|---|



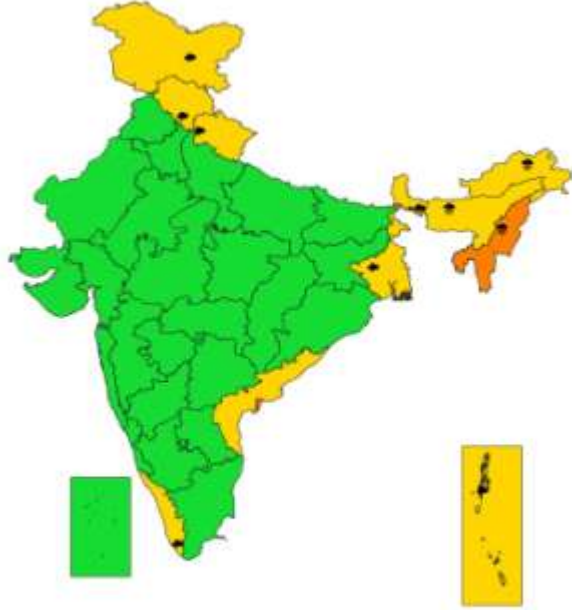
**SUBDIVISIONWISE WEATHER WARNING FOR DAY 4
(13-5-2023)**



- | | | |
|-----------------------------|------------------------|--------------------------|
| Subdivision Warning | Dust Storm | Subdivision color |
| ☁ Heavy Rain | ⚡ Strong Surface Winds | 🟢 NO WARNING |
| ❄ Heavy Snow | 🔥 Heat Wave | 🟡 WATCH (BE UPDATED) |
| ⚡ Thunderstorms & Lightning | 🌡 Cold wave | 🟠 ALERT (BE PREPARED) |
| ☁ Hailstorm | 🌫 Fog | 🔴 WARNING (TAKE ACTION) |

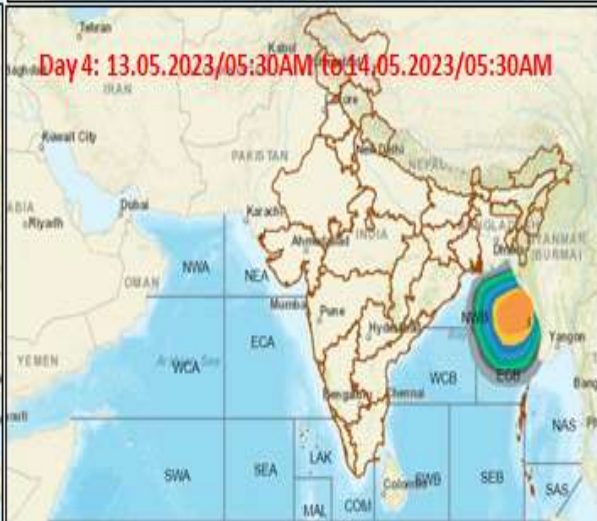
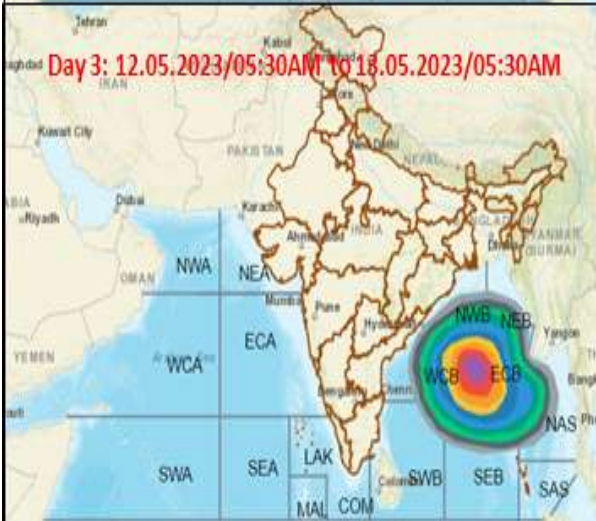
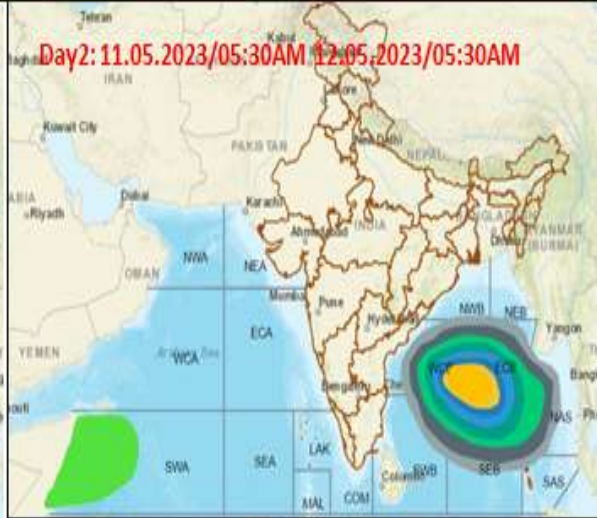


**SUBDIVISIONWISE WEATHER WARNING FOR DAY 5
(14-5-2023)**



- | | | |
|-----------------------------|------------------------|--------------------------|
| Subdivision Warning | Dust Storm | Subdivision color |
| ☁ Heavy Rain | ⚡ Strong Surface Winds | 🟢 NO WARNING |
| ❄ Heavy Snow | 🔥 Heat Wave | 🟡 WATCH (BE UPDATED) |
| ⚡ Thunderstorms & Lightning | 🌡 Cold wave | 🟠 ALERT (BE PREPARED) |
| ☁ Hailstorm | 🌫 Fog | 🔴 WARNING (TAKE ACTION) |

Fishermen warning graphics



	Squally WX with wind speed 40-50 kmph gusting to 60 kmph
	Squally WX with wind speed 50-60 kmph gusting to 70 kmph
	Gale wind speed 60-70 kmph gusting to 80 kmph
	Gale wind with wind speed 70-80 kmph gusting to 90 kmph
	Gale wind with wind speed 80-90 kmph gusting to 100 kmph
	Gale wind with wind speed 90-100 kmph gusting to 110 kmph
	Gale wind with wind speed 100-110 kmph gusting to 120 kmph
	Gale wind with wind speed 110-120 kmph gusting to 140 kmph
	Gale wind with wind speed 130-140 kmph gusting to 150 kmph
	Gale wind with wind speed 140-150 kmph gusting to 160 kmph

FISHERMEN ARE ADVISED NOT TO VENTURE INTO THE MARKED AREAS